



The National Disability Insurance Scheme (NDIS) is a new way of providing care and support for people with disability in Australia.

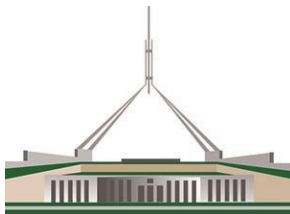


We want to find out how the NDIS is going. We are asking people to tell us what they think about the disability supports in their area.

### Who is doing the research?



The National Institute of Labour Studies (NILS) at Flinders University is leading a team to do the research.



We are doing this research for the Australian Government.

## Who are we looking for?



We want to hear from people who are in the NDIS and people who may be in the NDIS in the future.



We would also like to ask your family member or carer about their experiences of disability supports.

## What would I have to do?



We would like you to take part in the survey twice - once in 2016 and again in 2017.



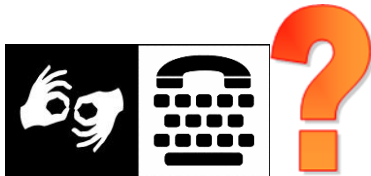
You can be interviewed over the phone.



You can fill in a paper questionnaire.



You can do the survey online.



You can tell us if you would like to do the survey but need to do it another way.



Translating and interpreting services are available.



If you are deaf or have a hearing or speech impairment, you can use the National Relay Service for free:

- TTY – 1800 555 677
- Speak and Listen – 1800 555 727
- Internet relay – [www.iprelay.com.au](http://www.iprelay.com.au)

## Do I have to do the survey?



No, you don't have to do the survey if you don't want to.



But, by taking part, you will be helping to make sure that the NDIS meets peoples' needs.



If you start the survey and decide that you want to stop, that's OK.

It's also OK if you don't want to answer any of the questions.

## What kind of questions will we ask you?

We will ask questions about:



- how well your disability supports work for you
- and if you are in the NDIS, how well the NDIS is working for you



- any problems you have had with disability supports
- or with the NDIS



- how the supports you receive affect your life
- how the NDIS has affected your life



There are no right or wrong answers.

We are interested in what you think and what you have experienced

### How will my answers to the questions be used?



Your answers to the questions will help the Government understand better what support people with disability need.

### What happens to the information I give?



We will keep all information you give us private. The information will only be used for this research.



There is more information about privacy on our website:

<http://ndisevaluation.net.au/privacy.cfm>

## Are there any risks to taking part?



Taking part in the interview will not put you at any risk.



It will not affect any support you get at the moment or might get in the future.

## Ethics approval



When we do research like this, we must make sure that we follow all the rules that apply.



One of these rules says that we must seek ethics approval.

This means that a group of people who work at Flinders University agree that our research is good and fair. We have received this approval for the research.

The project number is 6245.

## Would you like to take part or find out more information?



To take part in the survey you will need to register. You will receive a registration pack in the mail.

When you register you can tell us how you would like to do the survey.

## If you would like to know more.....



You can ask us more about the evaluation by sending an email to:

[ndisevaluation@flinders.edu.au](mailto:ndisevaluation@flinders.edu.au)



You can find out more about the NDIS Evaluation at our website

[www.ndisevaluation.net.au](http://www.ndisevaluation.net.au)